

Dear Parents

A Happy New Year to you all and a special welcome to all new children and parents.

COMMUNICATION WITH PARENTS

As is our usual custom, newsletters are numbered to help you determine if a letter has gone astray on the way home! Spares are available from the school office and copies will be posted on the notice boards around the school site. *This letter marks the start of the new school term and is identified as Sp / 1 / 2010* To follow :

- **Diary Dates, School Term and Holiday Dates**
- **Curriculum Plans - a summary of the term's work for your child's class**
- **Curricular Clubs Timetable - Most clubs start next week**

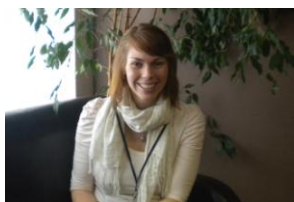
SCHOOL CLOSURE

Thank you for your co-operation during this period of challenging weather! Although exciting for children to experience the snow, our difficulties on Wednesday centred around staff travelling to work safely from Exeter & surrounding areas etc. and getting out of their driveways in one piece. The weather forecast also predicted further snow during the day which could have caused problems with parents collecting their children. Thank you once again to most of you for your understanding! I apologise for not informing everyone of closure earlier on Wednesday but we were hoping to open if at all possible, a point missed by some! I am conscious that closure makes childcare difficult and impacts on people's jobs. I am however grateful to all my staff who were clearing paths etc this morning from 7.15 a.m to enable safe access today. For future reference, information will be available on our website and from Palm Radio / Heart Radio / Radio Devon as soon as a decision has been made!

INCOME SUPPORT / REGISTRATION FOR FREE SCHOOL MEALS

Parents are entitled to register in confidence for free school meals for their children if they are in receipt of the following: *Income Support or Income-Based Job Seeker's Allowance or Child Tax Credit where the parent is not entitled to Working Tax Credit and whose annual income (as assessed by the Inland Revenue) does not exceed £16,040.* Registration helps the school as this 'number count' generates extra funding which we put into learning support in classes. It is therefore of benefit to the children in the school if all parents who are entitled to free meals register their entitlement ASAP, even if they do not wish to make use of the service. If your child normally has a packed lunch but they forget to bring it one day then they would be able to make use of the school meal service. Please register if you are entitled to! Menus and further information is available from the school office.

PARENTING SUPPORT - Angela Kime - Parenting Support at Oldway Primary



Bringing up children can be challenging, even if you're Marry Poppins! Sometimes another view point, a different idea or just a chance to get something of your chest is enough to help turn things around no matter how big or small.

I would also like to reintroduce myself as the Parenting Support Facilitator for Oldway Primary. I have recently returned from maternity leave after having 9 months off, I will be continuing with the parenting drop ins on Friday mornings at 8.45am. If you are unable to make the Drop ins on Friday's at 8.45am please telephone the Paignton Cluster on 01803 208102 to make alternative arrangements.

