



# Oldway Primary School Newsletter

Wednesday 3rd September 2025

Website: [www.oldwayschool.co.uk](http://www.oldwayschool.co.uk)

Telephone: 01803 557190

Email: [oldwayoffice@rivieraet.co.uk](mailto:oldwayoffice@rivieraet.co.uk)

## Walking Home Alone

For the safety of all our children, we ask that all pupils up to and including Year 4 are collected directly from their teacher at the end of the day. If you wish your year 5 or 6 child to walk home independently, please complete this form: [Y5/6 walking home](#).

Children will only be allowed to be released by their teacher with your direct permission. Thank you for helping us to keep your children safe!

## **Attendance**

Every minute counts! Coming to school helps your child learn, grow, and make lasting friendships. Let's make every day a great day together!



## **Head of School Message**

Dear Parents and Carers,

Welcome back to a new school year! We've been busy getting school ready and look forward to welcoming you all back to school on Thursday. Our staff will be ready to greet you at the gates at 8:30am and the classroom doors will also open slightly earlier, at 8:30am, in a bid to improve the flow of people around the school site in the mornings.

We are excited to begin this new school year with a few changes. A new project 'Classroom Excellence' to further improve every child's daily classroom experience; an improved swimming offer which will include all pupils from Nursery to Y6 and will make the best use of our outstanding swimming facilities; an improved performing arts offer; an improved SEND offer with more specialist provision and a wider team; a sports offer that brings us considerable success in competitions throughout the bay and a 'Personal Development' offer that grows every month as we make greater connections with our community. We're very excited for this year at Oldway!

We extend a special welcome to all children who will be starting their Oldway journey for the first time this week. We are looking forward to getting to know you! We look forward to welcoming everyone to school on Thursday 4th September.

Emma Bamber (Head of School)



## **School Opening Times**

The school gates open at the following times:

Morning opening times: 8:30 - 8:45

Morning registration: 8:45

Afternoon opening times: 3:10 - 3:30

Please be aware that the staff car park is closed to anyone apart from disabled badge holders from 8:00 - 3:30.

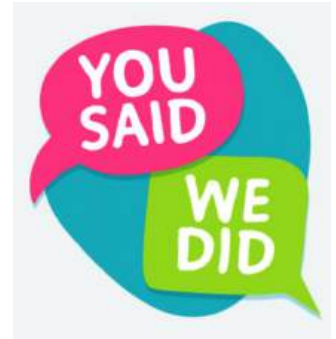
# September 2025: School Times

You said...

The playground was very crowded in the mornings whilst families were waiting for the doors to open and that some unaccompanied children could be unsafe.

We did...

We have altered the timings for doors opening to allow children to come straight into the building at 8:30am.



## **Mornings**

School Gates open at 8:30am

External Doors open at 8:30am

School starts and registers close at 8:45am



## **Afternoons**

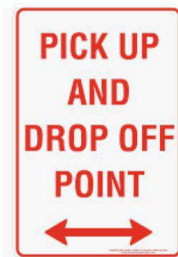
School Gates open by 3:10pm

School finishes and external doors are opened at 3:15pm

School Gates are locked at 3:30pm



# September 2025



EYFS Drop Off and Pick Up in the EYFS playground.

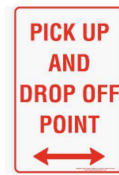


Year 1 Drop Off and Pick Up in the Year 1 playground.





# September 2025



Year Group	Drop Off	Pick Up
Year 2: Fairy Cove		
Year 2: Oyster Cove		
Year 2: Saltern Cove		
Year 3: Drop off in the playground by the music hut.		
Year 4: Drop off by the year 4 stairs.		

# September 2025

Year 5/6 Drop Off and Pick Up for  
Churston Cove and Elberry Cove



Year 5/6 Drop Off and Pick Up for St  
Mary's Bay, Berry Head and Fishcombe



# September 2025

Maidencombe and Breakwater Beach will be dropped off and picked up from the entrance under the canopy next to the middle playground.

**PICK UP  
AND  
DROP OFF  
POINT**



# Personal Development

We are very proud of our 'Personal Development' offer at Oldway. We begin every half term with a PD day and this is even more important at the beginning of the year when we prioritise building relationships and getting to know the rules and routines for the year ahead.



## Personal Development Days at Oldway

**'Personal Development'** is the development of a pupil's individual skills, attitudes, and understanding. This includes the development of self-awareness, self-esteem, and emotional intelligence, as well as the development of skills related to communication, teamwork, and critical thinking. The goal of personal development is to help pupils develop into confident and capable individuals who are able to navigate the challenges of modern life.

### Personal Development Day

Every half term at Oldway, we begin with a day which is focused on Personal Development. This is a day which is dedicated to supporting children to have a positive sense of themselves, respect for others, social skills, emotional well-being and a positive disposition to learning.



### Oldway School Values: Aspiration, Responsibility and Kindness

Each half term we focus on one of our Oldway values. In the first half of the autumn term we will focus on Responsibility. Our whole school assembly will have this value at the heart of its core messages and each class will discuss what this value looks like for their behaviour at school.

### Online Safety

In a world which is dominated by technology, it is vital that our children understand how to stay safe online. On our personal development days, every teacher teaches a lesson about 'Online Safety', which is carefully designed to educate each year group about the essentials of using the internet safely.

### Anti-Bullying

At Oldway, we take anti-bullying extremely seriously. In addition to class discussions about showing kindness to each other, each class will spend a session focusing on anti-bullying during the PD day. The children are reminded about what bullying is and take responsibility for how we speak to each other and for tackling bullying if we see it.

### PSHE

Personal, Social, Health and Economic Education learning and development is fundamental to the children's developmental journey, their understanding of the world around them and their recognition of their own self-worth as a citizen. During our personal development days, the children begin learning the next step in their PSHE education, which focuses on Life in the Wider World; Health and Wellbeing; and Relationships.

### Handwriting 'Oldway Presents...'

We will be doing our whole school 'Handwriting' competition which all classes will be involved in on our personal development day. The children will be writing poems linked to our core value 'Responsibility', focusing especially on the quality of their handwriting. There are certificates for most improved and golden pencils ready for the champions! We want our pupils to recognise that taking pride in our achievements is important.

# Safety Information



## Fire and Lockdown Drills

As part of our ongoing commitment to ensuring the safety and security of all students and staff, we always conduct fire drills at least once a term. This half term we will also be conducting a lockdown drill. This is to ensure that staff and children are aware of what to do in the event our school needs to be placed in a lockdown situation. Our first thought is often “intruders” when we talk about a lockdown. However, this could be for a variety of other reasons such as poor weather, an issue at the hospital or a fire/contamination issue in the locality.

We understand that such drills can sometimes cause concern. This is the first time we will be conducting a lockdown drill, which is an expectation put in place for safeguarding children. The Department for Education guidance recommends that schools carry out a lockdown practice annually. The primary purpose of a lockdown drill is to prepare our school community for the unlikely event of an emergency situation that requires us to secure the building and keep everyone safe inside. These drills are a standard practice in schools nationwide and are conducted in a calm, structured manner to minimise any anxiety or fear.

During the drill, students will be guided by their teachers through the necessary steps to stay safe, including moving to designated safe areas, securing doors, and maintaining silence. The drill is designed to ensure that everyone knows what to do in case of an actual emergency. The entire process is expected to last no more than 5-10 minutes.

We want to assure you that the safety and well-being of your children are our top priorities. Our staff have been thoroughly trained to handle these situations, and we conduct these drills to ensure that everyone knows their role and can act quickly and effectively if needed.

To help your child feel more comfortable with the drill, you may want to discuss it with them at home. Emphasise that, just like fire drills, lockdown drills are a way to keep everyone safe. Reassure them that it is just practice and that there is no immediate danger.

During this half term, we will be explaining fire and lockdown procedures to the children. They will then practise these in class with their teachers so they are well prepared.

During the week of 15th September, whole school fire and lockdown drills will take place.

# Important Information - Communication

*We are all working together to achieve the best for the children, families and community members who make up the Oldway family. Communication is an important part of this. Please see the information below:*

## Communication - in person

Staff are always happy to meet with you in person.

- At the beginning of each day, class teachers and many of our TAs are in the classrooms ready to greet the children so it is not always possible for a teacher to come and speak to you. However, other members of staff are on duty at the school gate and can pass on a message for you. Alternatively, you can visit the school office and ask the Admin Team to pass on a message on your behalf.
- At the end of the day, class teachers may be able to stop and speak to you once they have dismissed all the children. If they can't speak to you there and then, they can offer you an alternative.
- If you'd like to make an appointment to speak to a member of staff and haven't been able to speak to them, please contact the office.

## Communication - Seesaw

Seesaw is a quick and easy way for school and families to communicate with each other. Please sign up to Seesaw if you haven't already done so.

We will use Seesaw to:

- send quick class/year group specific messages so you may miss out on information if you are not signed up
- post photographs of learning so you can have a window into their daily life in class.

### **If you do not have access to Seesaw, you may miss out on important information.**

Parents can also send messages directly to the class teacher using Seesaw. This is the best way to share those quick messages that it is not always possible to share at drop off or pick up. You can also send photos of learning at home, which we would love to see.

Teachers are not expected to, nor are they always able to, reply straight away to any messages. They will also not be expected to reply outside their working hours e.g. evenings or weekends. During the school day, teachers are not able to monitor messages on Seesaw as they are busy teaching the children. Therefore, if you need to get urgent information to the teacher during the school day, please contact The Office

### **Please do not use Seesaw for:**

**Absence Information.** If your child is going to be absent from school, this information should still be communicated via the absence line on each day of their absence (01803 557190)

**Raising concerns or making us aware of issues.** If you have concerns that you want to discuss with the senior leadership team, please contact The School Office using [oldwayoffice@rivieraet.co.uk](mailto:oldwayoffice@rivieraet.co.uk)

## Communication - Email

Messages that are sent out from The School Office are sent via email. If you are not receiving messages from school, please let us know. It is also important to let us know if you have changed your email address or any other contact information.

# Exceptional Data: Summer 2025

At Oldway, we are passionate about standards. We are delighted with our GLD, Phonics and KS2 data. In 2025/26, the government has a focus on a 'high quality Reception year' we can definitely say that Oldway children are already rece

We are unbelievably proud that every single year 1 child passed the phonics screening check. Our children, staff and parents worked incredibly hard with RWI to achieve this result. The year 1 children and staff were all treated to a celebratory ice lolly in the sun as a well deserved reward for all their hard work.

Phonics screening check  
**100%** passed in Year 1!



National average 80%



# Celebrating success!

**100%**

of Year 1 children passed the Phonics Screening check

These **OUTSTANDING** results mean that we are in the top 5% in the country!

**85%**

of Reception children achieved GLD (Good Level of Development)

This is **SIGNIFICANTLY ABOVE** the national average of 68%!

## KS2 SATS results\*

We're happy to report that these have been **OUR BEST** 'Greater Depth' scores in recent years!

READING	Expected Standard: 71%	Greater Depth: 30%
WRITING	Expected Standard: 77%	Greater Depth: 14%
MATHS	Expected Standard: 77%	Greater Depth: 25%
COMBINED	Expected Standard: 65%	Greater Depth: 11%

- **Expected Standard:** working at the expected standard for a child at the end of year 6
- **Greater Depth:** working at a greater depth within the expected standard, with a strong understanding of the curriculum

\*unvalidated data



## Swimming Offer at Oldway starting this term!

We are so proud of our swimming offer at Oldway. Our children are very lucky to have this amazing facility and we are now able to offer swimming to all of our children from Nursery to Y6. Tell your friends - they might want their children to come and join us!

### Swimming at Oldway



- **Nursery** - *Stay and Splash* sessions with parents
- **Reception** - Small group swimming sessions
- **Y1 - Y4**: All children have weekly swimming lessons for half of the year and are taught by our specialist swimming team
- **Y5/6**: A tailored swimming offer to ensure all children reach the National Curriculum standard
- **Y6**: A new *Rescue Skills* programme for those children who have reached the required swimming standard in order to prepare them for living near the sea



# Oldway Staffing News



We welcome Jed Turner to our staff.

Hello! My name is Mr Turner and I'm really excited to be joining the hardworking team at Oldway Primary School this September. I've been teaching for four years and, having lived in Torbay all my life, I know just how much fantastic work Oldway does for its children. I'm thrilled to now be a part of that. I have a real passion for teaching and love building strong relationships with the children I work with. I'm a big sports fan, who loves football and golf (Chelsea!). I have a passion for movies and books, so I'm always ready for whatever conversations the children throw at me! I can't wait to get started and look forward to becoming a part of the Oldway community.



We also welcome back several familiar faces. Alex Fortune is a familiar face at Oldway. Alex has been working at Roseland, another of our trust schools, but returns to Oldway in September as part of our Y6 team. Welcome back, Alex.

We also have two staff - Sally Harman and Sasha Powell - returning from maternity leave. Welcome back to the Oldway Team!



# Allergies & Healthy Eating



We would like to remind all families that our school is a *nut aware* environment.

Due to the presence of students with severe nut allergies, we kindly ask that you **do not send any nuts or nut-based products** (including peanut butter, Nutella, muesli bars containing nuts, etc.) in your child's lunchbox or snacks.

Even small traces of nuts can trigger life-threatening allergic reactions. By working together, we can help ensure the safety and wellbeing of all students.



## Healthy Breaktime Snacks

We kindly remind you to provide your child with a healthy snack for break time each day. We encourage snacks such as fresh fruit, vegetables, rice cakes, or plain crackers.

**Please do not send any snacks containing nuts**, as we have children in school with severe nut allergies.

Thank you for your support in promoting a healthy eating habits for our pupils, Research consistently shows that providing nutritious snacks positively influences students' academic performance, behavior, and overall well-being.

# SEND

The provision for our SEND pupils is a top priority at Oldway. We work closely with outside agencies, with our Educational Psychologist and will local providers of specialist provision, such as Mayfield and Chestnut.

In September, we will be opening two SEND hubs to meet the needs of our pupils and are very much looking forward to this additional provision.

Next year we are involved with two local projects - PINS & SLCN Locality model. This will provide further professional development for all staff in school as well as support for parents - look out for the coffee and biscuits events.

We are also partnering with Brunel academy who have expertise in SEMH (Social, Emotional and Mental Health needs). Brunel will provide professional support to our SEND team to enable us to better meet the needs of our pupils.

## MHST/ INCLUSION TEAM

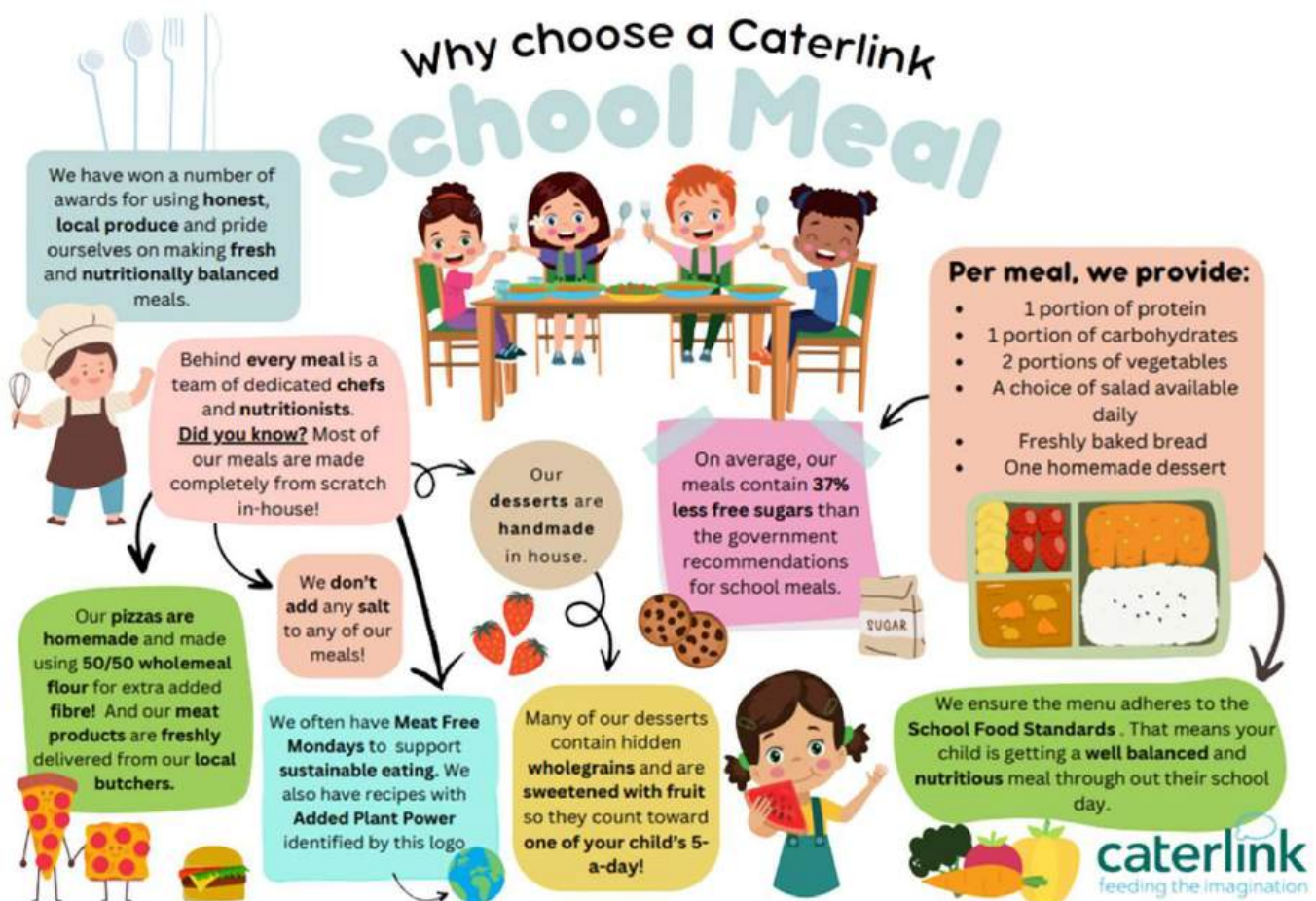
All of the adults in school and have had Trauma Informed Schools UK training, We have four ELSA trained adults in school, a trauma informed practitioner and will provide attachment lead training this academic year to further develop our inclusion offer.



# INTRODUCING

**caterlink**  
feeding the imagination

We listened to your feedback and we're pleased to let you know that from September 2025, we will be working with **Caterlink** to provide freshly-made school meals on site.



We will be in touch shortly to let you know how you can book your child's meals through ParentPay. Menus will be available on the school website before the end of term.

# Oldway School Uniform

Please see our school uniform detailed below. You can purchase items school uniform with the school logo from [Riviera School Days](#) and we also promote unbranded school items from local supermarkets.

Winter	<ul style="list-style-type: none"><li>● Navy V-neck jumper/sweatshirt/ cardigan</li><li>● Charcoal grey or black trousers/ skirt/ pinafore dress</li><li>● Light blue short sleeved polo shirt</li></ul>
Summer	<ul style="list-style-type: none"><li>● Navy V-neck jumper/sweatshirt/ cardigan</li><li>● Charcoal grey or black trousers/ shorts or skirt/ pinafore dress</li><li>● Light blue short sleeved polo shirt</li><li>● Blue gingham dress</li></ul>
Sports kit	<ul style="list-style-type: none"><li>● Light blue PE shirt available</li><li>● Navy shorts/tracksuit bottoms/leggings</li><li>● Trainers (not plimsolls)</li></ul> <p><b>On PE days, we would like children to still wear an Oldway jumper or cardigan. We recommend that the children wear tracksuit bottoms/ leggings in the winter months. We request that children DON'T wear a tracksuit top.</b></p>





## Admissions 2026: School tours for prospective parents

Thursdays from 9.00 - 10.00am

- September 11<sup>th</sup>, 18<sup>th</sup>, 25<sup>th</sup>
- October: 2<sup>nd</sup>, 9<sup>th</sup>, 16<sup>th</sup>, 23<sup>rd</sup>

**Limited spaces - book now**

📞 01803 557190

✉ [oldwayoffice@rivieraet.co.uk](mailto:oldwayoffice@rivieraet.co.uk)

🌐 [www.oldwayschool.co.uk](http://www.oldwayschool.co.uk)



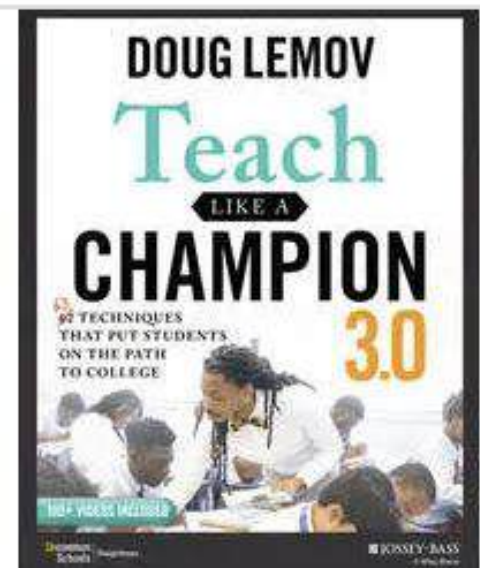
Education  
Trust



## Classroom Excellence

School improvement is at the heart of all we do. Our Senior Leadership Team, alongside the leaders of Riviera Education Trust and the other trust schools, are constantly seeking to improve the offer for Riviera pupils.

In September, we will launch our 'Classroom Excellence' programme to further develop our offer in the classroom and to ensure that we have greater consistencies across the school. Many of the principles for 'Classroom Excellence' will be based on Doug Lemov's 'Teach like a champion' approach. We are looking forward to developing this programme and implementing it in the classroom.



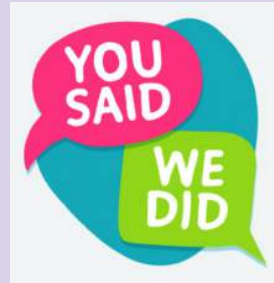
## Celebrating our children

### **You said...**

That our children who do the 'right thing' should be celebrated more.

### **We did...**

Last year, we introduced golden phonecalls and 'Hot Chocolate with the head' to celebrate the amazing Oldway pupils who uphold our school values.



## **Hot Chocolate with the Head**

'Hot Chocolate with the Head' returns on Fridays this term. Mrs Bamber and Mr Hallett love celebrating with our pupils who uphold the school values.



## **Golden Phone Calls**

We're very proud of all our children who receive golden phone calls. Every fortnight, teachers nominate a pupil and write a lovely message for Mrs Bamber to share with their family. Golden phone calls celebrate children who uphold the Oldway Values - aspiration, responsibility and kindness.

Making the phone calls is the highlight of Mrs Bamber's week.



# Performing Arts at Oldway

Mrs Scott



---

## What a year

This year has been an exciting year for Performing Arts at Oldway. From performing with the Young Voices choir in Birmingham to a fantastic Year 6 production, the children have shown great enthusiasm and showmanship and have really demonstrated their theatrical skills!

---

## What's next?

Next year we will be expanding our Performing Arts offer whilst refining the experiences we will provide for the children. We will be launching the Oldway School Choir - a year round opportunity for children to represent the school at local events. We will continue to offer Drama club with Mrs Scott and Mrs Layland and there will even be a dance and singing club in the Summer term - Beat Squad! Blossoms will continue to offer private music tuition - please don't forget that group lessons are a great way to bring down the cost of lessons and also boost children's confidence. Please contact Blossoms for more information.

---

## Watch This Space!

### Autumn Term

Young Voices Choir with Mrs Rendell (Years 4/5/6)

Drama Club with Mrs Scott and Mrs Layland (KS2)

### Spring Term

Oldway School Choir (KS2)

Drama Club (KS2)

### Summer Term

Oldway School Choir (KS2)

Drama Club (KS2)

Beat Squad with Miss Collis (KS2)

# How do I access help from Torbay Food Alliance?

**We cannot take referrals through social media - if you need help with food please do not message us through Facebook as this will only delay you getting the help you need.**

You can request help by calling the Torbay Community Helpline on

**01803 446022**

The Helpline is open 10am - 1pm and 3pm - 6pm Monday to Friday and 11.30 am - 12.30pm on Saturdays.

If you cannot phone, you can complete the online form at [bit.ly/torbayhelpline](http://bit.ly/torbayhelpline) and they will call you back

If you have a question about anything else, or just want to keep up to date with news, you can message, like and follow us on Facebook - simply click the Facebook logo on the menu above. Please note that our Facebook page is run by volunteers, so we may not always be able to reply straight away.

**Piano, Violin and  
Singing.**

**Sign up now ready  
for September start.**

**Lessons take place  
during the school  
day and are  
charged at:**

**One to one:  
30 minutes £20  
20 minutes £13.50**

**Groups:  
from £7**

**for more details  
contact:**

**Laura@blossomsmusic.co.uk  
07515805812**

**Blossoms  
Music @ Oldway**



# Attendance & Punctuality

**Making sure your child goes to school on time is really important for their learning. If they're late a lot, it can cause some issues.**

It's important for children to be on time for school because it helps them do their best in learning. Being punctual means forming good habits for the future. So, it's a big deal that your child gets to school on time.

Here's the deal: according to the Department for Education's rules, there's a specific time in the morning when schools stop marking who's there. If your child shows up after that time, they won't just get a late mark – they'll be marked as absent (*unauthorised absence*) for the whole morning.

If your child is late because of something important, like a doctor's appointment, the school will understand that. However, if there's no good reason, they'll mark it as an unauthorised absence.

So, it's best to be on time! Here are some things you might want to know:

**Why does my child get marked absent for the whole morning even if they came before lunch?** If your child arrives after a certain time in the morning, the school has to mark them absent (unauthorised absence) for the whole morning. It's a rule they have to follow.

**Can I get a fine if my child is late a lot?** Yes, if your child has 10 or more times of being late (unauthorised absences) without a good reason, you might get a fine.

**It seems a bit strict that my child gets a late mark if they are just a couple of minutes late.** Schools have rules about being on time, and being even a little late can count as not being on time. It's important to try to leave early to avoid being late.

**What if our whole family overslept, and it's not my child's fault?** Even if it's not your child's fault, being late because of oversleeping is still counted. They might get a late mark or be marked as absent (unauthorised absence), depending on how late they are.

**What if there's a traffic jam or something else that's not my fault?** The school usually can't change the rules for one person, but if there's a big problem, like heavy snow causing delays for many people, they can make allowances.

**What if I tell the school my child will be late? Do they still get a late mark?** Yes, they might still get a late mark, but it's good if you tell the school. They'll know you're aware, and it helps if you say when your child will arrive and why they're late.

**Do I have to tell the school if I know my child will be late?** It's really helpful if you do. If your child is very late, telling the school might help them understand why and maybe say it's okay.

**What if I am trying to get my child to school on time but they don't want to go?** If your child is refusing to go to school on time, you can contact the school. They have a team that can work out why and maybe help your child and you.

## LOST MINUTES = LOST LEARNING!



If a pupil arrives late, but before 9.05, they will be marked as late (L)

If a pupil arrives after 9.05 they will be marked as absent for that session (U)

<b>Summer Term 2025</b>	First day	Tuesday 22nd April 2025
	Bank Holiday	Monday 5th May 2025
	Half term	Monday 26th May - Monday 2nd June 2025 inclusive
	Non-Pupil Day	Monday 2nd June 2025
	Last day	Thursday 24th July 2025
	Non-Pupil Day	Friday 25th July 2025
	Summer holidays	Friday 25th July 2025 - Wednesday 3rd September 2025 inclusive

<b>Autumn Term 2025</b>	Non-Pupil Day	Tuesday 2nd September 2025
	Non-Pupil Day	Wednesday 3rd September 2025
	First day	Thursday 4th September 2025
	Half Term	Monday 27th October - Monday 3rd November 2025 inclusive
	Non-Pupil Day	Monday 3rd November 2025
	Last day	Friday 19th December 2025
	Christmas holidays	Monday 22nd December 2025 – Friday 2nd January 2026 inclusive

<b>Spring Term 2026</b>	First Day	Monday 5th January 2026
	Half Term	Monday 16th - Friday 20th February 2026
	Last day	Thursday 2nd April 2026
	Easter holidays	Friday 3rd – Friday 17th April 2026