



Oldway Primary School Newsletter

Monday 9th March 2026

Website: www.oldwayschool.co.uk

Telephone: 01803 557190

Email: oldwayoffice@rivieraet.co.uk

Weekly Attendance

Whole School 96.29%

Top Class Attendance

1st - Elberry - 99.68%

2nd - Fairy Cove - 99.24%

3rd - Beacon - 99.15%

Shells - 94.06%

Broadsands - 98.72%

Goodrington - 95.43%

Preston Sands - 93.80%

Livermead Sands - 95.92%

Torre Abbey - 94.89%

Oyster Cove - 98.30%

Saltern Cove - 95.77%

Babbacombe Beach - 96.72%

Maidencombe Beach - 86.31%

Meadfoot Beach - 98.03%

Oddicombe Beach - 98.54%

Anstey's Cove - 96.22%

Hope Cove - 94.49%

Berry Head - 97.47%

Breakwater Beach - 86.61%

Churston Cove - 95.73%

Fishcombe Cove - 97.85%

St Mary's Bay - 95.87%

Attendance at school is vital for learning. If your child's attendance is less than 95%, their learning will be affected by their absence.

Head of School Message

Dear Parents and Carers,

It was great to see so many families for Parents' Evening last week. There were so many positive conversations - it is always good to see the whole school community and to discuss your child's well-being and progress.

The newsletter is packed with messages and information: messages about keeping our children safe - car parking, our crossing patrol vacancy and nut awareness; information about student leadership - mental health ambassadors and digital leadership; information about our Nursery offer as we'll be opening our 2 year old Nursery in September; opportunities to seek support through our coffee mornings and our continued campaign from our eco council for a brighter future - The Big Plastic Count is happening right now! We also have the results from our latest Parent Survey and have included our response.

Emma Bamber
(Head of School)



School Opening Times

The school gates are open at the following times:

Morning opening times: 8:30 - 8:45am

Morning registration: 8:45am

Afternoon opening times: 3:10 - 3:30pm

Please be aware that the staff car park is closed to anyone apart from disabled badge holders from 8:00am - 3:30pm

Surveys

We are grateful for the responses to the 'Oldway Parents and Carer Survey' which closed on Friday.

- My child is happy at school - 93%
- My child feels safe in school - 95%
- When I have raised concerns with the school they have been dealt with properly - 92%
- The school gives my child the right support to enable them to learn well - 91%



All responses were above the benchmark for similar schools and all responses were more positive than previously.

The survey platform provides an overview of parents feedback to 'One thing the school does really well is...'



N: Parents appreciate how the nursery prepares children for a successful start in reception.

R: Key strengths mentioned include effective communication with parents, successful phonics provision, and the school's supportive environment tailored to individual children, particularly those facing difficulties.

Parents also commend the dedication of teachers and the high expectations set for all children.

Y1: Many parents appreciate the nurturing atmosphere, inclusive practices, and the strong sense of community within the school.

Y2: Responses centre around effective communication, support for children's individual needs, and the dedicated care from staff. Parents are pleased with the school's commitment to enabling student progress and offering enriching resources.

Y3: Parents express satisfaction with the school's commitment to pupil care, effective communication, quality teaching, and extracurricular opportunities. The sense of progress and support for their children is notably appreciated.

Y4: A strong partnership between the school and parents is a recurring theme, with communication and staff dedication highlighted as key attributes. Parents feel their children's needs are addressed well and that teachers go above and beyond.

Y5: Parents appreciate the school's nurturing environment, effective communication, and the dedication of the staff. The focus on kindness and fairness towards all students is particularly valued.

Y6: Parents acknowledge prompt responses to concerns, effective communication, and the overall supportive atmosphere. The school's attention to students' needs is also recognised.

Response to the survey - communication

You said that communication could be improved.

We have worked very hard to ensure communication is improved with 'Next Week at Oldway', a review of Seesaw, a team who do gate duty both morning and evening, an increase in coffee mornings to allow parents to meet, high profile social media posts and regular newsletter. Other ideas are always welcome.

Oldway Communication Channels

Do you have something to share?
Has something happened that has made you smile?
Do you have a concern that you need resolving?

Who can you contact?

Your child's class teacher, using Seesaw or in person.

Any member of Oldway SLT:



Emma Bamber
(Head of School)

Chris Hallett
(Deputy Head)

Hannah Fox
(Assistant Head)

Zoe Milligan
(Assistant Head)

Eve Edworthy
(Assistant Head)

Our SENDCos and Family Support Workers:



Laura Bateman
(Sendco)

Eva Rowe
(DSL/FSW)

Lindsay Chalk
(FSW)

Our SLT, SENDCOs and FSWs can be found at the school gates along with our Inclusion Team before and after school.

At Oldway, we love to hear good news and we also take concerns seriously. We are a large school and work very hard to make sure we are available to listen. Please use any of the channels listed above, come to the school office or email: oldwayoffice@rivieraet.co.uk

Nut-Aware Reminder

Our school is a nut-aware environment. We have several students with severe, life-threatening allergies to peanuts and tree nuts. Even tiny traces can cause a serious reaction. Please help us keep everyone safe by avoiding all peanut and tree nut products when packing lunches, snacks, or classroom treats.

Choose safe, nut-free options so everyone can learn, play, and thrive together. Thank you for your support.

THIS SCHOOL IS NUT AWARE



EX: NUTELLA, PEANUT BUTTER, NUT SPREADS, TRAIL MIX WITH NUTS, GRANOLA BAR WITH NUTS, CHOCOLATE OR BAKED GOODS WITH NUTS.

Classroom Excellence

At Oldway, our vision is that every child has the best experience possible. We work hard to improve every element of school life.

In September, we launched an initiative called 'Classroom Excellence' based on the principles of Doug Lemov's 'Teach like a Champion'. The aim is to use evidence informed research to make teaching and learning as effective as possible. Our teachers meet each week to explore the research and think about how this can be adapted into teaching and learning at Oldway for our children. Recently, we have been developing our approach to Oracy, and focusing on increasing the opportunities for talk in class.

Choral response is a highly effective technique within the broader framework of oracy development, primarily used to build confidence, embed key knowledge, and ensure full-class participation in speaking activities. It is particularly useful for modeling and rehearsing new or complex vocabulary, technical terms, phrases, or definitions. Saying words aloud repeatedly helps embed them in students' long-term memory, increasing the likelihood they will use them in their own verbal and written work.



My Turn, Your Turn

'My turn, your turn' is a teaching strategy used in oracy to model and practice spoken language, especially for building full sentences and vocabulary. It involves a teacher or student saying a sentence ("my turn"), and then the class repeating it together ("your turn"). The strategy can be adapted to different learning stages, from choral repetition for exact phrases to more independent responses. This starts in our phonics programme (RWI) and continues through the school.

Turn and talk is an effective, low-stakes pedagogical strategy used to develop students' oracy skills by providing a structured opportunity to verbally process and articulate their ideas with a partner before sharing with the wider class



Car Park Safety

As you are aware, our school car park is a very busy area. We are a large school with over 80 adults working on site, and the staff car park is primarily for their use.

We have allowed access to the car park for those displaying a disabled badge and have also permitted parents and carers to use the top car park for breakfast club drop-off.

However, in recent weeks at least four staff cars have been hit by vehicles using the car park. Unfortunately, several cars have been damaged and, in these cases, the driver responsible has not left their details or alerted the staff member involved.

While we understand that parking locally can be difficult, if these incidents continue we will have to review access to the car park.

The car park is small and anyone using it must take great care and be patient. It is also essential that anyone driving on site when children are arriving or leaving drives **very slowly and with extreme caution**.

The safety of our children must always come first, and you may need to wait while manoeuvring your vehicle. Thank you for your understanding and cooperation in helping us keep our school community safe.



Mental Health Ambassadors

Our Mental Health Ambassadors have been spreading kindness around the school. We are lucky to have such amazing mental health ambassadors at Oldway.

They have also decided to have a toy sale to help raise funds for pastoral resources. If you are able to donate any unwanted toys in good condition, please bring them to the school office by Friday 20th March.



Thank you for your support.

Digital Leaders

The Y5 Digital Leaders built & coded working traffic lights last week with LEDs that switched on in the correct order. It was difficult to connect all of the wires and lights properly but they persevered and were successful.



World Book Day

What a fabulous celebration of reading for World Book Day! We read stories with our book buddies, had an amazing author visit from Clare Helen Welsh, our younger children took home free books, our older children watched a live WBD lesson (we were mentioned on the BBC website) and we had costumes and models as far as the eye could see. We even had a Gruffalo in the lunch hall! A really lovely day enjoyed by all.





WORLD
BOOK
DAY

OLDWAY PRIMARY SCHOOL

CAREERS DAY



WE NEED PARENT VOLUNTEERS!

THURSDAY 26th MARCH

We're looking for parents, carers or family members to visit classes and talk to the children about their job!

All careers are welcome – whether you work in healthcare, trades, retail, emergency services, business, creative industries, hospitality, sport, transport or any other field.

Every job has value and helps our children see the wide range of opportunities available to them.

You will be asked to speak to each class for about 15- 20 minutes,

You could explain:

- What your job involves
- What a typical day looks like
- What you enjoyed at school
- What a typical day looks like
- Any advice you would give to children about their future.
- What you enjoyed at school

If possible, bringing an object, uniform, photograph or prop linked to your job would be fantastic, as the children love seeing real-life examples.

If you can support us on the morning or afternoon of 26th March, please email cbryan@rivieraet.co.uk



We'd love as many volunteers as possible to make the day as inspiring and memorable as we can!

Shells Reading Afternoon

Shells had a super first Reading Afternoon this week. They loved exploring all of the different books in the classroom and sharing stories together. It was wonderful to share our enthusiasm for reading..



Big News for Little Learners!

Shells Nursery at Oldway will officially begin taking 2-year-olds from September 2026.



Supertato

Our Reception children have been loving their new story 'Supertato'. They designed their own evil and superhero vegetables. Take a look at some of their amazing creations.



Hot Chocolate with the Head

Congratulations to these recipients of 'Hot Chocolate with the Head' These superstars always uphold the Oldway values.





Coffee Morning

Laura Bateman (SENDCo), Kate Squire (Trust SEND and Inclusion Lead), Rachel Gallagher and Lydia Titcombe (Torbay EP service)

- Top tips for Transition from school to home
- You said..., We have... (who to go to when, external agencies ...)



Monday 16th March 9am - 10:30am
Oldway Drama (KSI) Hall

The Big Plastic Count

Oldway primary School is taking part in The Big Plastic Count!

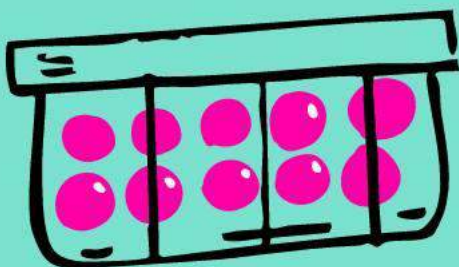
This March, thousands of people from across the country are joining the UK's biggest people-powered investigation into household plastic waste – Oldway included! We'd love for your household to take part.

By counting every piece of plastic packaging you throw away in a week, you'll help pressure the government and companies to reduce plastic waste and create a better future for young people.

This event will run from 9th - 15th March. During this week, we will be recording the amount of plastic that we recycle in our homes and at school over 1 week using a class link. These will be shared via Seesaw closer to the time.

How exciting!

**THE BIG
PLASTIC
COUNT
9-15 MARCH**



**OUR
SCHOOL IS
COUNTING
ON YOU!**

**GET READY TO COUNT
YOUR PLASTIC WASTE**

SWISCO

A Torbay Council Company

Recruiting local heroes now!

Help Torbay's school children cross safely

Up to 10 hours per week (term time)
Uniform provided

01803 207678

highways@torbay.gov.uk



Football News

Oldway Year 5/6 Boys' team headed to Paignton Academy for the third round of league fixtures.

Well done to all of the players that played and a special thank you to the family and friends who came to support us.

It was another action packed evening on Paignton Academy's fantastic playing surface and Team Oldway showed the passion and desire to compete in every match. We are proud of every single player.

Oldway Team 1

Oldway 0-0 Sacred Heart

Oldway 1-0 Preston (Harry)

Oldway 2-1 Marldon (Louis, Harry)

Oldway Team 2

Oldway 3-0 Preston (Isaac, Junior, Nathan)

Oldway 0-1 Roselands



Players of the matches: Harry and Nathan

Netball News

Oldway Year 5/6 Netball team played a couple of friendly matches against Sherwell Valley.

Two of our teams played and both had a great time, showed fantastic sportsmanship and played high quality netball. A massive well done to the players and a huge thank you to the family and friends who came to support. Thanks as always, to our opposition players, teachers and supporters.



Oldway Team 1

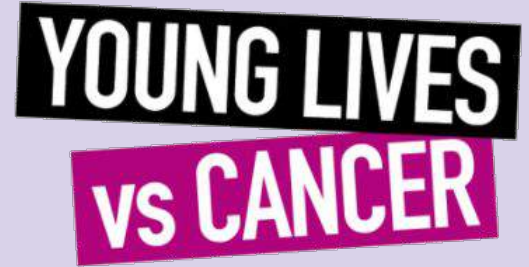
Oldway 15-0 Sherwell Valley

Oldway Team 2

Oldway 8-1 Sherwell Valley

Fabulous Fundraising

Thank you to everyone who was able to give a donation at the last non-uniform day. We raised a fantastic £310.75 for Young Lives vs Cancer.



Ben, who was a student leader last year, and his family have seen first hand just how amazing this charity is. They are active fundraisers on behalf of 'Young Lives v Cancer' and we are honoured to be able to do the same.

How we raise money for charities:

During the year, we have non uniform days at the end of a half term to raise money for charity.

Based on an idea from Ben, one of our previous 'Student Leaders', the School Council (from the past two years) have decided to have a charity linked to each of our school houses.

The charities selected were finalised by the School Council earlier this year and have all been selected for a reason.

Maple have been linked with 'Breakthrough T1D'; a national charity supporting research for Type 1 Diabetes (red).

Willow have been linked with 'Young Lives v Cancer'; a national charity supporting children and young people with cancer. (blue)

Hazel have been linked with 'Baton of Hope Torbay'; a local charity supporting mental health. (green)

Elder have been linked with 'Feed a Child Torbay'; a local charity providing food for local children and their families. (yellow)

Fantastic Fractions

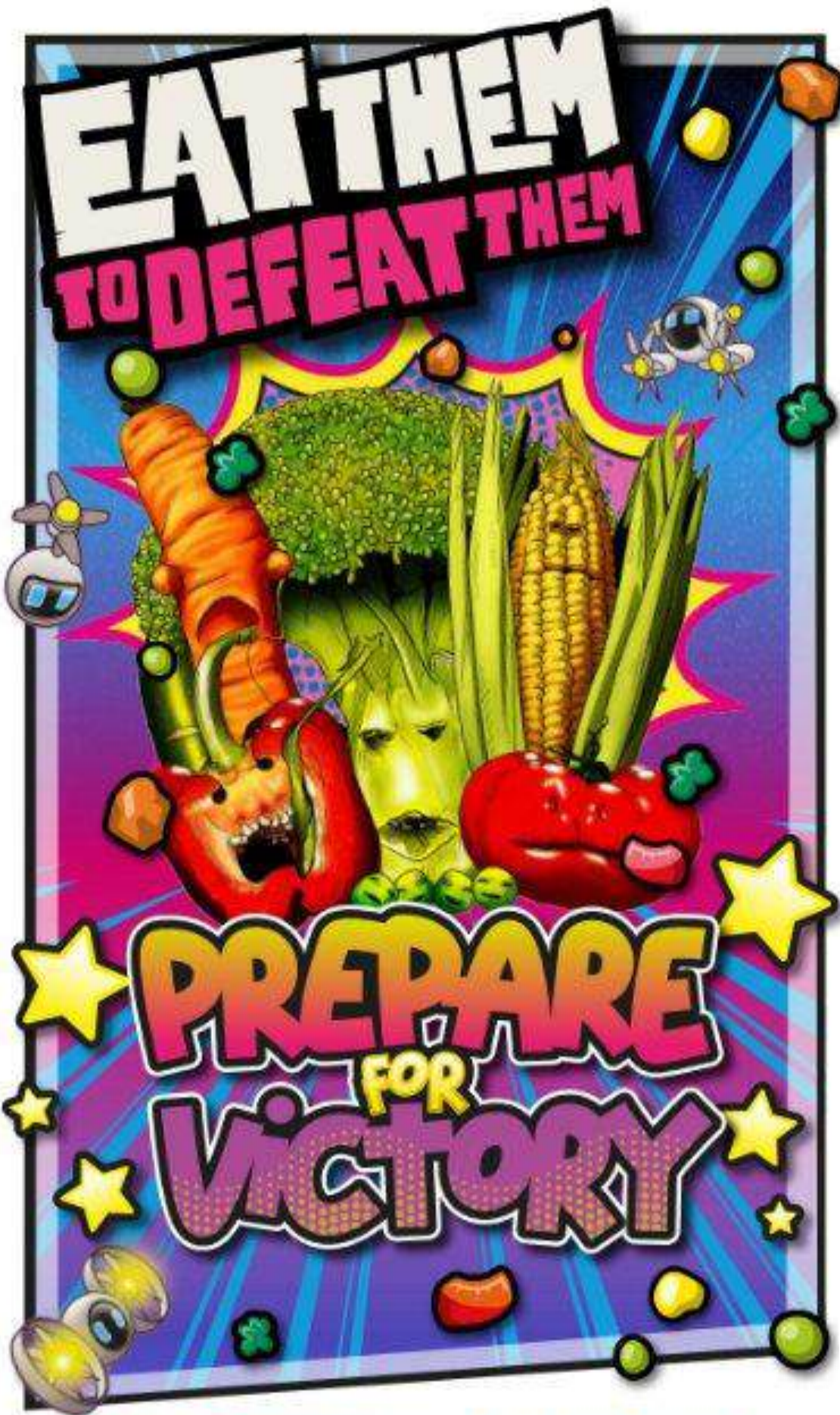
Maidencombe Beach have been busy trying to work out fractions of amounts. They used different items from around the school to help them (chocolate was the class favourite!). All children really enjoyed the lesson and challenged themselves throughout.



Magical Learning

Breakwater Beach brought their learning to life before half term. After completing their instructional writing on how to create a potion, they celebrated by brewing their own magical concoctions. It was great fun, just like going to school at Hogwarts!





VEGPOWER

Sainsbury's



VEG MATTERS!

If you are worried about your child's mood, behaviour and learning, a good place to start is their diet.

Studies have shown that the best diet for good mood, behaviour and learning is one that includes a regular eating pattern and a variety of food with 2-3 handfuls of vegetables per day.

60% MORE VEG

On average children who take part more than once permanently increase their veg consumption.

HOW IT WORKS

SCHOOLS

The programme starts in schools on the 2nd March with veg lessons and tasting events

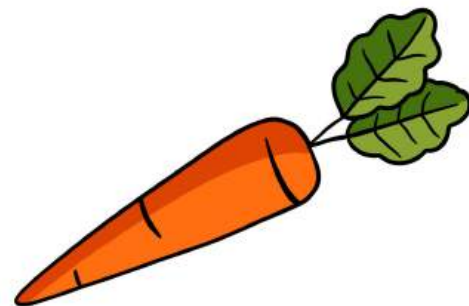


STICKERS

Look out for your child coming home with a sticker when they try veg at school

FAMILIES

Your school will send home a reward chart to help you turn that behaviour into lasting habits.



Children, Young People and Families Neurodiversity Wellbeing Team

We offer a free, confidential advice line for children, young people and families on the Neurodiversity Pathway in Plymouth and Devon.

Advice can include:

- Anxiety
- Diet
- Friendships
- Sleep
- Linking with other teams and services in your area
- School difficulties
- Support strategies



Contact us: 01752 435404

Monday - Friday, 09:00-17:00

Have your say:

Share feedback to help us improve our services. Use the QR code to complete the questionnaire.



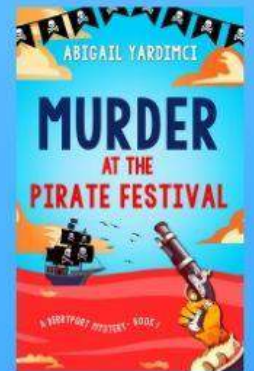
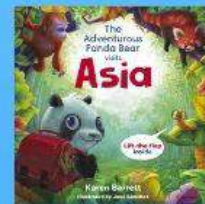
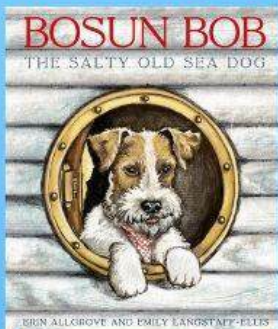
We support people to lead independent, healthy lives

Libraries
Unlimited



Saturday 21st March
Children's Author Day
10am - 2pm
Paignton Library

- Storytimes
- Meet and Greet local authors
- Writing display by St Michael's C of E academy.
- Have a Go activities
- Writing competition winner announced!



SAT 21st
MARCH 2026

Author Collective

01803 853870

discover.librariesunlimited.org.uk

brixham.library@librariesunlimited.org.uk

Devon
County Council

TORBAY COUNCIL

Libraries Unlimited is a registered charity 1170092. Every penny raised supports local library services.
To donate, please visit librariesunlimited.org.uk



Creative writing competition.
Calling all budding authors...
Enter our writing competition to be
in with a chance of winning some
great prizes for aspiring authors.

**Ages 4-7 - Create a book cover and title for a story about
Adventures of Libro, the library cat.**

**Ages 7-11 - Write a short story on an adventure that Libro,
the library cat, goes on from one of our Bookquest zones.
(About 500 words)**

Zones: Jurassic, Underwater, Prehistoric, Animal, Ancient,
Transport, Creativity, Technology, Imagination



DEADLINE: Saturday 7th March, 4pm

Author Collective

01803 853870

discover.librariesunlimited.org.uk

brixham.library@librariesunlimited.org.uk

Devon
County Council

TORBAY COUNCIL



News.
WISE

The
Guardian
Foundation

FREE FAMILY NEWS LITERACY WORKSHOPS

Learn to Spot Fake News & Navigate the Media Safely

Who: Children aged 7+ with parents or carers and teachers

What: Become a news detective!
NewsWise workshops led by library staff &
The Guardian Foundation

Where: Paignton Library

When: Friday 20th February
12:30-14:00

Cost: Completely FREE!

To book:



Made possible with funding from

Ofcom

Monthly Housing and Cost Of Living Surgeries

Need advice with benefits, housing or finances?

Come along to one of our Cost Of Living Surgeries where you can speak to a Benefits Adviser and Housing Officer.

Support with your housing needs, signposting and liaison with housing services.

Dealing with notice to quit and the eviction process.

Housing standards and dis-repair
Illegal evictions.

Tenancy rights.
Devon Home Choice

Benefits

Checking what benefits and financial support you might be able to get to help with.

Surgeries held monthly. In person appointments in Torquay, Paignton and phone appointments in Brixham



How do I access help from Torbay Food Alliance?

We cannot take referrals through social media - if you need help with food please do not message us through Facebook as this will only delay you getting the help you need.

You can request help by calling the Torbay Community Helpline on

01803 446022

The Helpline is open 10am - 1pm and 3pm - 6pm Monday to Friday and 11.30 am - 12.30pm on Saturdays.

If you cannot phone, you can complete the online form at bit.ly/torbayhelpline and they will call you back

If you have a question about anything else, or just want to keep up to date with news, you can message, like and follow us on Facebook - simply click the Facebook logo on the menu above. Please note that our Facebook page is run by volunteers, so we may not always be able to reply straight away.

Oldway Diary Dates Spring 2026



Spring 1: Aspiration	Spring 2: Responsibility
<p><u>January</u></p> <p>5th First day of Spring Term 5th Personal Development Day 7th Sound Communities Club starts for Year 6 9th Steve Darling MP to visit Oldway 12th Year 5/6 football league fixtures (Boys) 15th Census Day 19th Year 5/6 football league fixtures (Girls) 22nd Year 5/6 handball/tchoukball festival at Paignton Academy Sports Hub for St Marys Bay 26th Year 3/4 mixed team football fixtures 27th Netball friendly matches at Oldway 27th Young Voices performance in Birmingham for Oldway choir 29th Year 4 handball/tchoukball festival at Paignton Academy Sports Hub for Anstey's Cove 29th Heatree residential information meeting for Year 5 parents 30th Year 4 trip to Bournemouth Symphony Orchestra, Great Hall, Exeter</p> <p><u>February</u></p> <p>2nd 'Mummy & Me' visit to Oldway swimming pool 5th Year 1 handball/tchoukball festival at Paignton Academy Sports Hub for Livermead Sands 6th NSPCC Number Day 6th Doel Cup Year 5/6 boys football 9th/10th 'Glow in the dark' Dodgeball for Year 1 - 6 9th Presentation from the Dental Team - Year 2 10th Stay and Play for parents and pre school children 10th Safer Internet Day 11th Wonderstruck Festival Y5 Brixham College 11th TBGS Able and Talented workshop 12th 'Dream Big' careers day (TBC) 13th Last day of half term and non-uniform Fundraiser</p> <p>Half Term: 16th - 20th February</p>	<p><u>February</u></p> <p>Year 2 Paignton Zoo trip - dates TBC Year 6 SATs/teacher assessment Q and A for parents at 3:30 pm - date TBC Year 1 Phonics Screening Info meeting for parents 23rd Staff and children return to school 23rd Personal Development Day 25th 3:30 - 6:30pm Parents / carers consultations</p> <p><u>March</u></p> <p>2nd 3:30 - 6:30pm Parents / carers consultations 2nd Secondary school allocation day 2nd Launch of 'Eat Them to Defeat Them' healthy eating project 5th World Book Day 6th Doel Cup Year 5/6 girls football 9th Science Week 12th Year 5/6 Outdoor Education Sports at Paignton Academy Sports Hub for Berry Head 16th/17th Class Photos with Fraser Portraits 19th Year 3 Outdoor Education Sports at Paignton Academy Sports Hub for Oddicombe Beach 20th Comic Relief 24th Year 1 Paignton Library trip 25th Community Open Day - History of Oldway 25th Year 2 visit to Christ Church 26th Year 2 Outdoor Education Sports at Paignton Academy Sports Hub for Fairy Cove 31st OSF Easter disco 31st Year 5 RAMM trip for Churston, Elberry and Berry Head</p> <p><u>April</u></p> <p>1st Year 5 RAMM trip for Churston, Elberry and Berry Head 2nd Last day of term and non-uniform fundraiser</p> <div style="border: 1px solid black; padding: 10px; margin-top: 20px;"> <p>Easter Holidays Staff and pupils return for the summer term on Monday 20th April 2026</p> </div>

Attendance & Punctuality

Making sure your child goes to school on time is really important for their learning. If they're late a lot, it can cause some issues.

It's important for children to be on time for school because it helps them do their best in learning. Being punctual means forming good habits for the future. So, it's a big deal that your child gets to school on time.

Here's the deal: according to the Department for Education's rules, there's a specific time in the morning when schools stop marking who's there. If your child shows up after that time, they won't just get a late mark – they'll be marked as absent (*unauthorised absence*) for the whole morning.

If your child is late because of something important, like a doctor's appointment, the school will understand that. However, if there's no good reason, they'll mark it as an unauthorised absence.

So, it's best to be on time! Here are some things you might want to know:

Why does my child get marked absent for the whole morning even if they came before lunch? If your child arrives after a certain time in the morning, the school has to mark them absent (unauthorised absence) for the whole morning. It's a rule they have to follow.

Can I get a fine if my child is late a lot? Yes, if your child has 10 or more times of being late (unauthorised absences) without a good reason, you might get a fine.

It seems a bit strict that my child gets a late mark if they are just a couple of minutes late. Schools have rules about being on time, and being even a little late can count as not being on time. It's important to try to leave early to avoid being late.

What if our whole family overslept, and it's not my child's fault? Even if it's not your child's fault, being late because of oversleeping is still counted. They might get a late mark or be marked as absent (unauthorised absence), depending on how late they are.

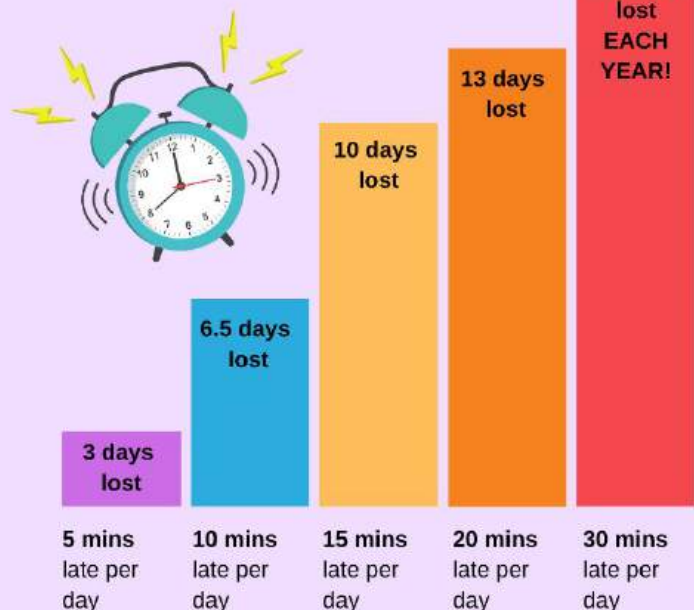
What if there's a traffic jam or something else that's not my fault? The school usually can't change the rules for one person, but if there's a big problem, like heavy snow causing delays for many people, they can make allowances.

What if I tell the school my child will be late? Do they still get a late mark? Yes, they might still get a late mark, but it's good if you tell the school. They'll know you're aware, and it helps if you say when your child will arrive and why they're late.

Do I have to tell the school if I know my child will be late? It's really helpful if you do. If your child is very late, telling the school might help them understand why and maybe say it's okay.

What if I am trying to get my child to school on time but they don't want to go? If your child is refusing to go to school on time, you can contact the school. They have a team that can work out why and maybe help your child and you.

LOST MINUTES = LOST LEARNING!



If a pupil arrives late, but before 9.05, they will be marked as late (L)

If a pupil arrives after 9.05 they will be marked as absent for that session (U)



**Absence line: 01803 557190 option 1
Absence line (text only): 07775 680213**

Autumn Term 2025	Non-Pupil Day	Tuesday 2nd September 2025
	Non-Pupil Day	Wednesday 3rd September 2025
	First day	Thursday 4th September 2025
	Half Term	Monday 27th October - Monday 3rd November 2025 inclusive
	Non-Pupil Day	Monday 3rd November 2025
	Last day	Friday 19th December 2025
	Christmas holidays	Monday 22nd December 2025 – Friday 2nd January 2026 inclusive

Spring Term 2026	First Day	Monday 5th January 2026
	Half Term	Monday 16th - Friday 20th February 2026
	Last day	Thursday 2nd April 2026
	Easter holidays	Friday 3rd – Friday 17th April 2026

Summer Term 2026	First day	Monday 20th April 2026
	Bank Holiday	Monday 4th May 2026
	Half term	Monday 25th May - Monday 1st June 2026 inclusive
	Non-Pupil Day	Monday 1st June 2026
	Non-Pupil Day	Tuesday 2nd June 2026
	Last day	Tuesday 21st July 2026
	Non-Pupil Day	Wednesday 22nd July 2026
	Summer holidays	Thursday 23rd July - Friday 4th September 2026 inclusive

Oldway School Uniform

Please see our school uniform detailed below. You can purchase items school uniform with the school logo from [Riviera School Days](#) and we also promote unbranded school items from local supermarkets.

Winter	<ul style="list-style-type: none">● Navy V-neck jumper/sweatshirt/ cardigan● Charcoal grey or black trousers/ skirt/ pinafore dress● Light blue short sleeved polo shirt
Summer	<ul style="list-style-type: none">● Navy V-neck jumper/sweatshirt/ cardigan● Charcoal grey or black trousers/ shorts or skirt/ pinafore dress● Light blue short sleeved polo shirt● Blue gingham dress
Sports kit	<ul style="list-style-type: none">● Light blue PE shirt available● Navy shorts/tracksuit bottoms/leggings● Trainers (not plimsolls) <p>On PE days, we would like children to still wear an Oldway jumper or cardigan. We recommend that the children wear tracksuit bottoms/ leggings in the winter months. We request that children DON'T wear a tracksuit top.</p>

